

## *Anatomy and Physiology of the Ear*

- Cross section
- Pinna
- Tympanic membrane (eardrum)
- Ossicles
- Inner ear
- Cochlea

---

---

---

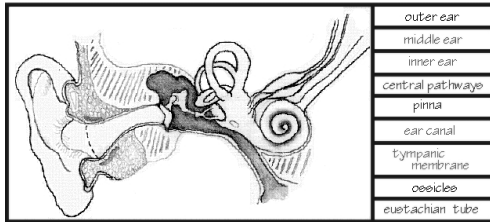
---

---

---

---

## *Cross section*



---

---

---

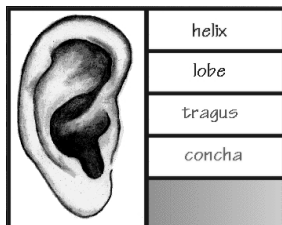
---

---

---

---

## *Pinna*



---

---

---

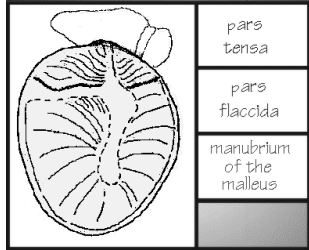
---

---

---

---

*Tympanic membrane (eardrum)*



---

---

---

---

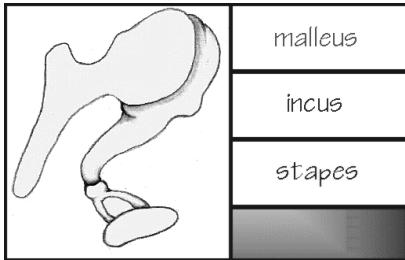
---

---

---

---

*Ossicles*



---

---

---

---

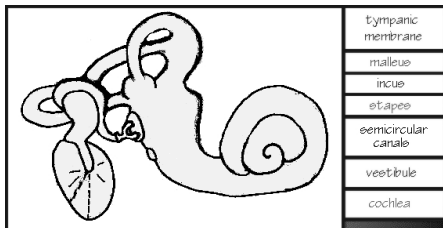
---

---

---

---

*Inner ear*



---

---

---

---

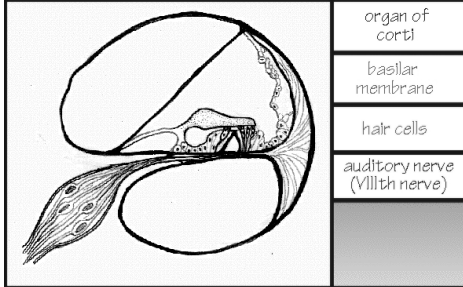
---

---

---

---

## Cochlea



---

---

---

---

---

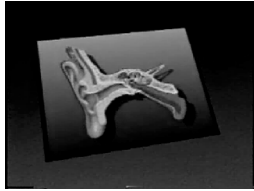
---

---

---

- How does the ear work?
- Sound waves enter ear canal where they are amplified (resonated).
- Tympanic membrane and ossicles vibrate.
- Fluids of inner ear vibrate and stimulate hair cells.
- Hair cells release an electric signal which travels to the brain.

## Physiology



---

---

---

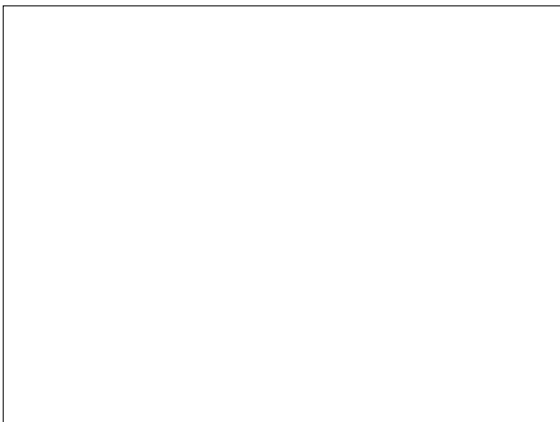
---

---

---

---

---



---

---

---

---

---

---

---

---