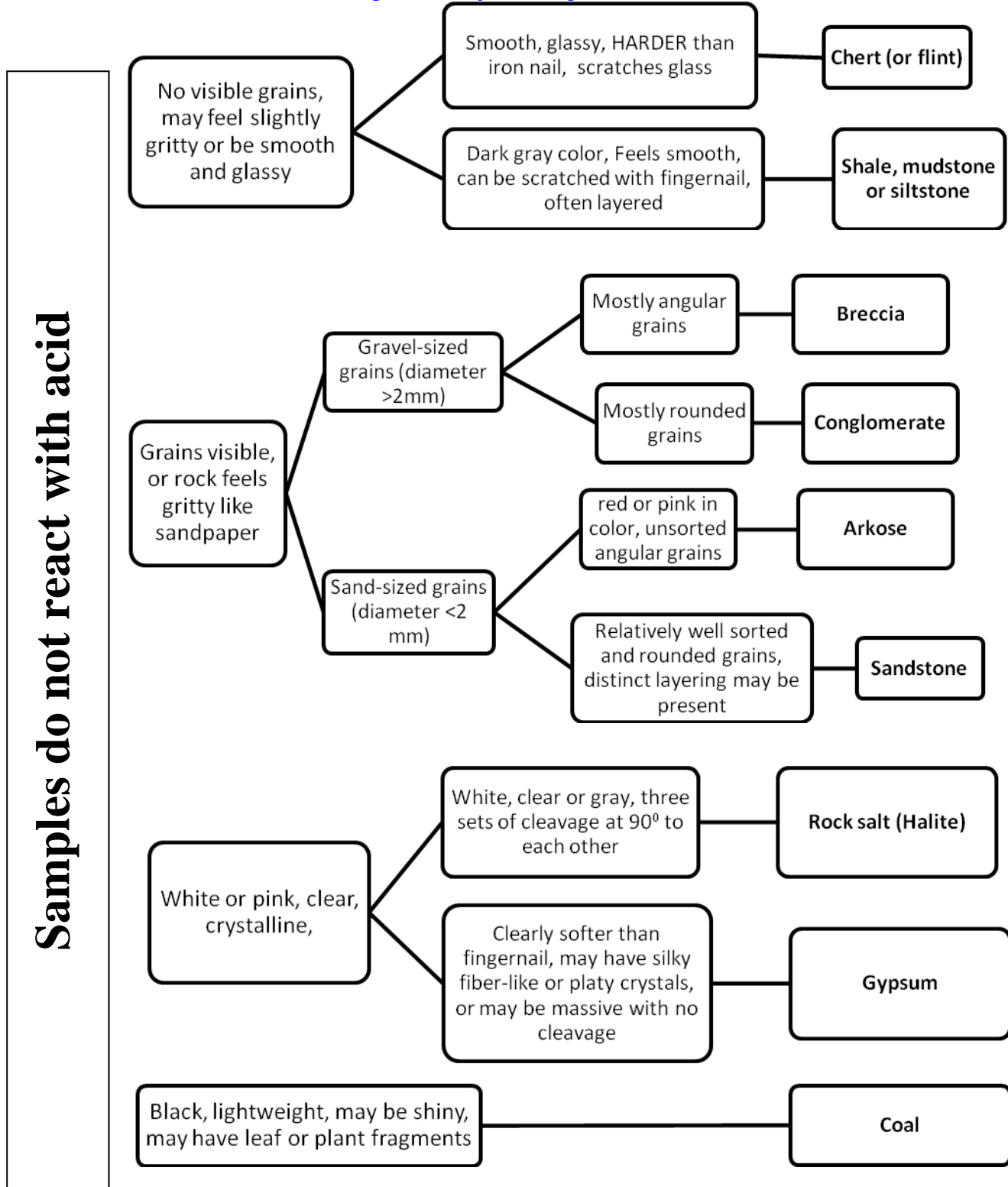


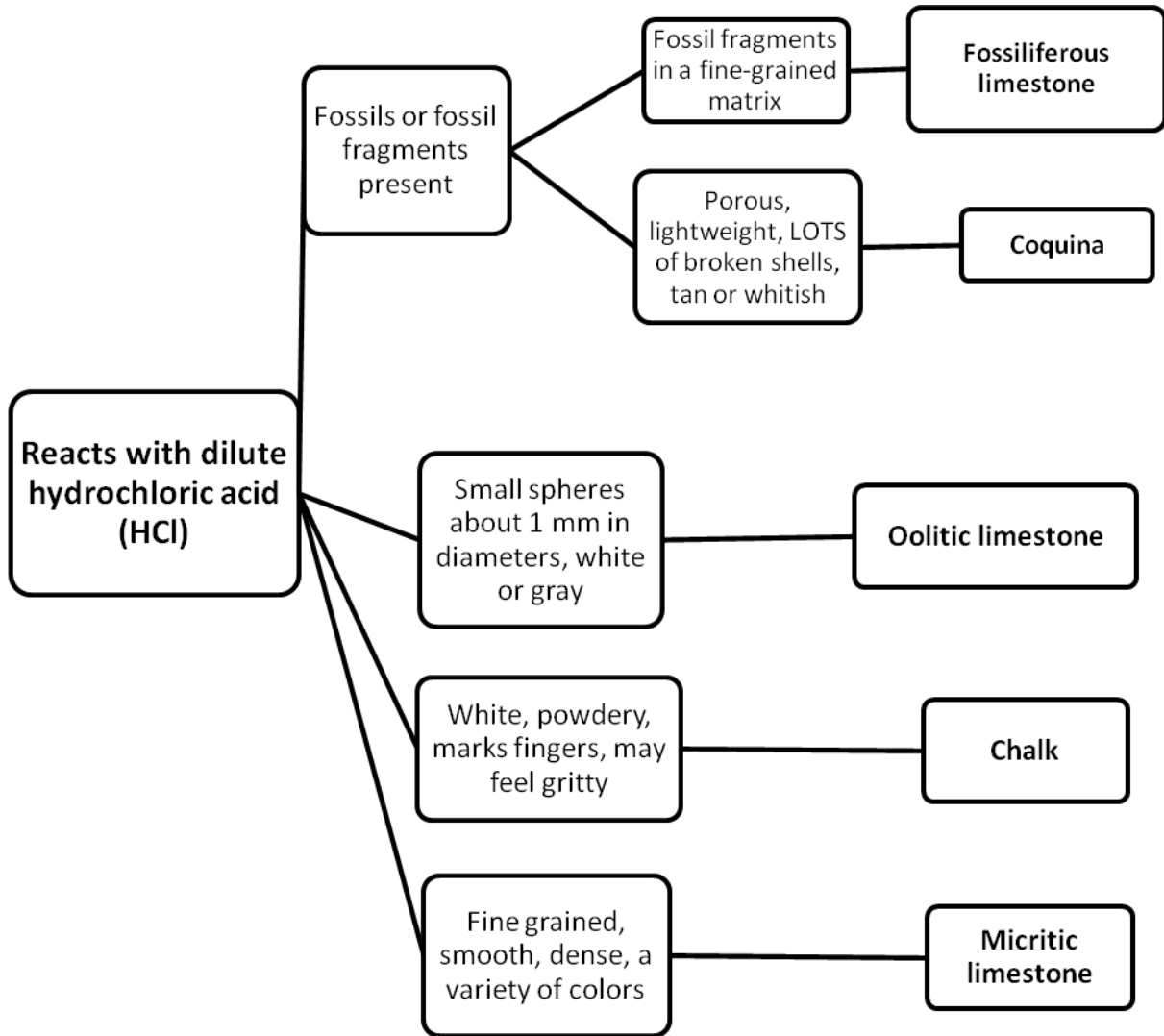
Sedimentary rocks and minerals, and metamorphic rocks lab

Simplified identification key for common sedimentary rocks

(Modified after L.S. Fichter, <http://csmres.jmu.edu/geollab/fichter/SedRx/index.html>)



Sedimentary rock identification key contd.

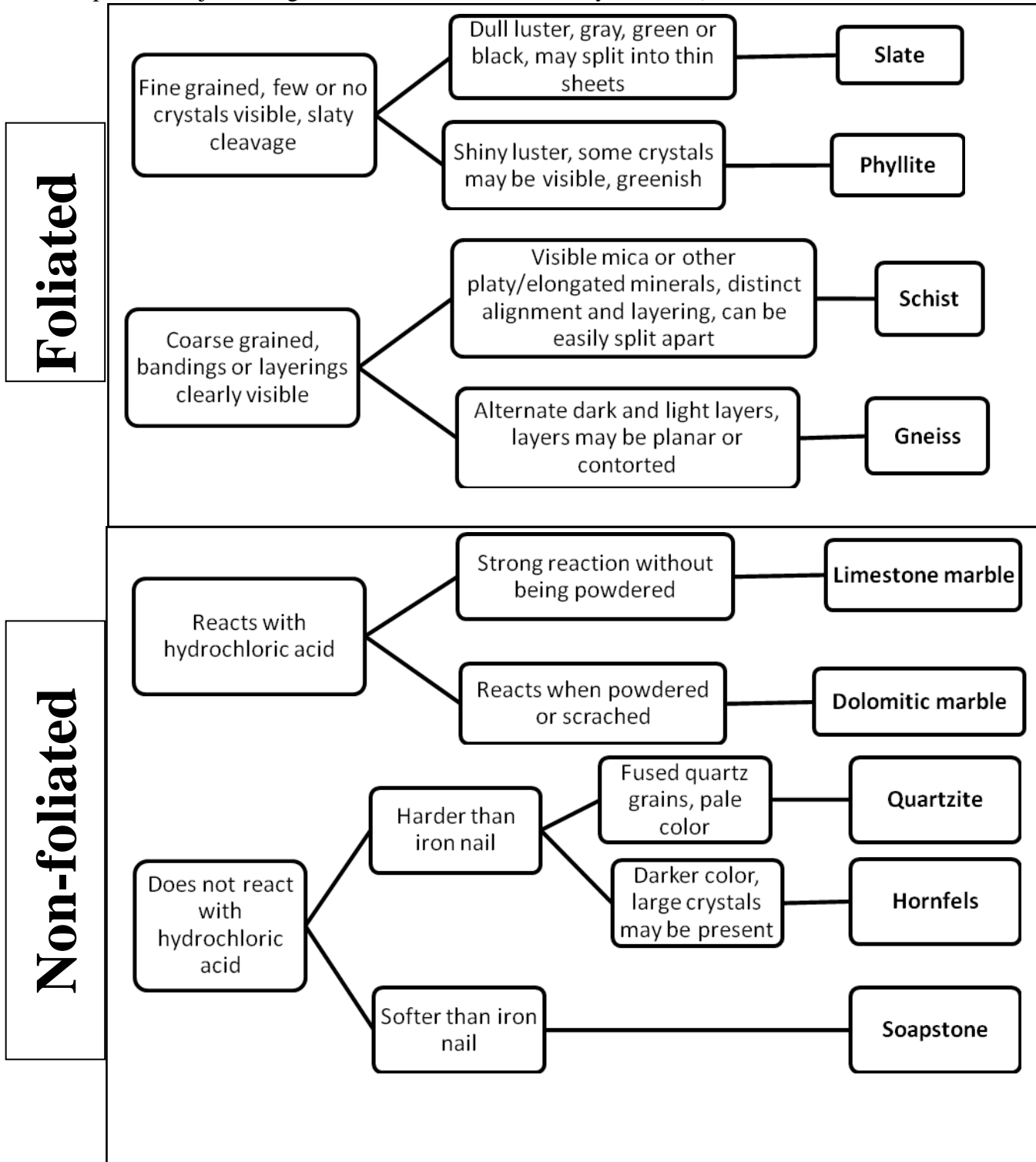


Part II: Metamorphic rocks

Simplified identification key for common metamorphic rocks

(Modified after L.S. Fichter,

<http://csmres.jmu.edu/geollab/fichter/MetaRx/metakeycom.html>)



Metamorphic rocks form when pre-existing igneous or sedimentary rocks are changed by increased pressure, temperature, directed stress, fluid action etc. without melting. The most obvious changes are changes in texture and mineral composition.

Metamorphic rocks are classified based on their texture. If there is a distinct layering in the rock (called foliation), the rock is called **FOLIATED**. If there is no obvious layering in the rock, the texture is **NON-FOLIATED**.

Question #1: In your own words **describe** the identifying physical characteristics of each of the four metamorphic rock samples in the large tray (tray 0), **identify them**, and **arrange them** from lowest to highest grade of metamorphism. Use the table on the previous page for identification.

Identifying characteristics (texture, grain size, luster, the nature of the foliation... etc.)	Name

Question #2: A metamorphic rock and its parent rock (original rock from which the metamorphic rock formed) are given in trays 2, 3 and 4. Complete the following table based on these samples.

Tray #	Parent rock name	Metamorphic rock texture (foliated/non-foliated)	Metamorphic rock name	Describe the differences between the texture of the parent rock and that of the metamorphic rock
2				
3				
4				